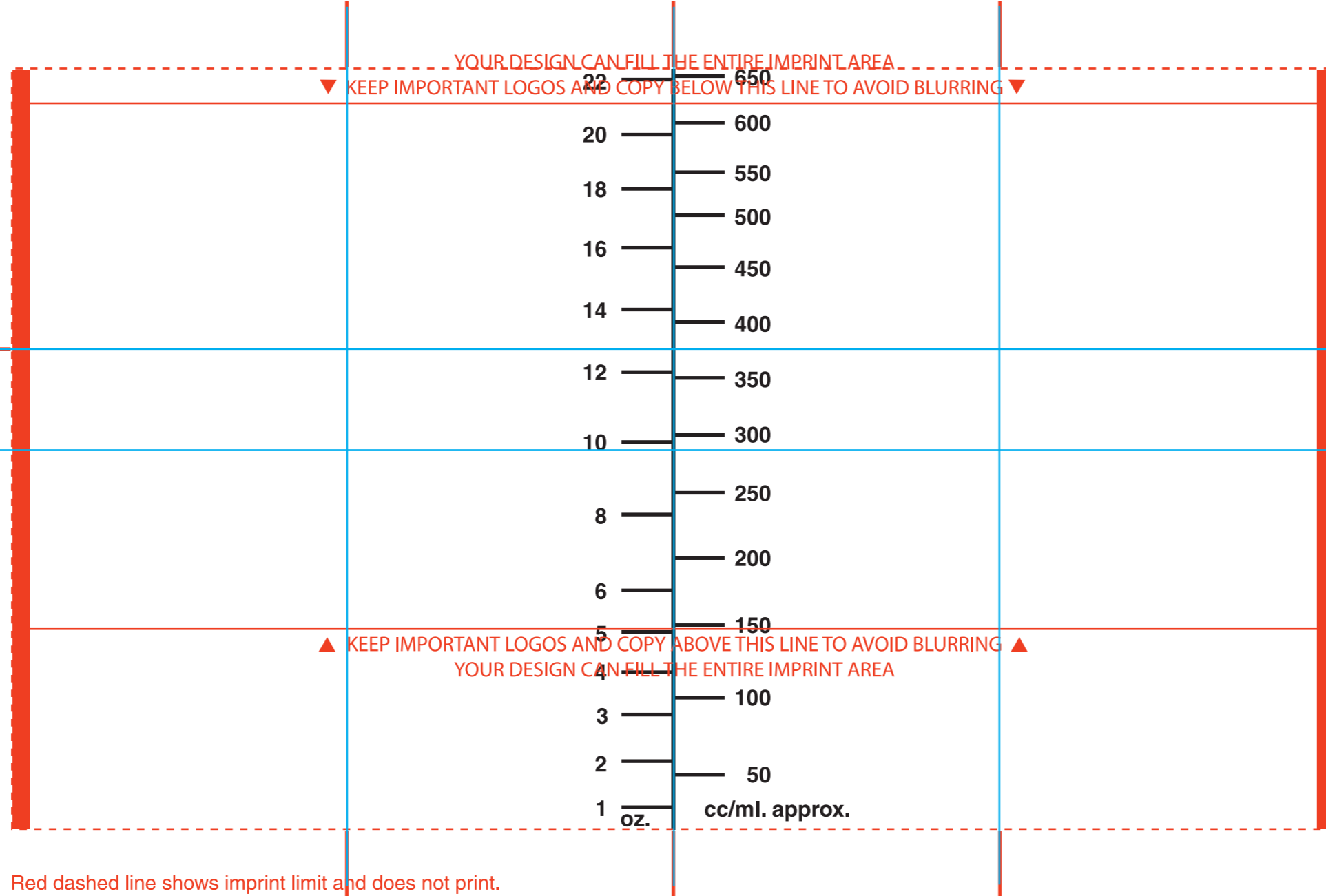


This guideline indicates the center line on the side.

This guideline indicates the center line opposite the handle.

This guideline indicates the center line on the side.

000,000.0 PY-235 0 INK COLOR(S): INI C



Red dashed line shows imprint limit and does not print.

Background color simulates XXXXXXXX cup color and does not print.

PY-235 GRID

12/12/18

Dimension with 1/8" overlap: 10"w X 5.75"h

For best results, design your art using solid spot colors. If process printing is desired you MUST contact your Whirley DrinkWorks sales representative.

Use this guideline when using smaller logos to keep it high on the imprint area.

This guideline indicates the center line from top to bottom.

YOUR DESIGN CAN FILL THE ENTIRE IMPRINT AREA
KEEP IMPORTANT LOGOS AND COPY BELOW THIS LINE TO AVOID BLURRING

KEEP IMPORTANT LOGOS AND COPY ABOVE THIS LINE TO AVOID BLURRING
YOUR DESIGN CAN FILL THE ENTIRE IMPRINT AREA

Red bars indicate the overlap area. Use a solid color to overlap or keep this area "blank" to create a gap.